

: μ

:

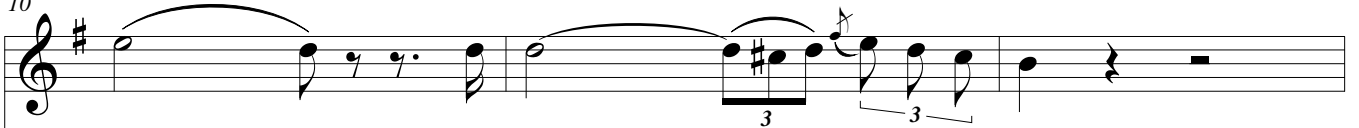
Largo

Measures 1-4. The right hand contains a melodic line with triplets and a trill. The left hand contains chords and triplets.

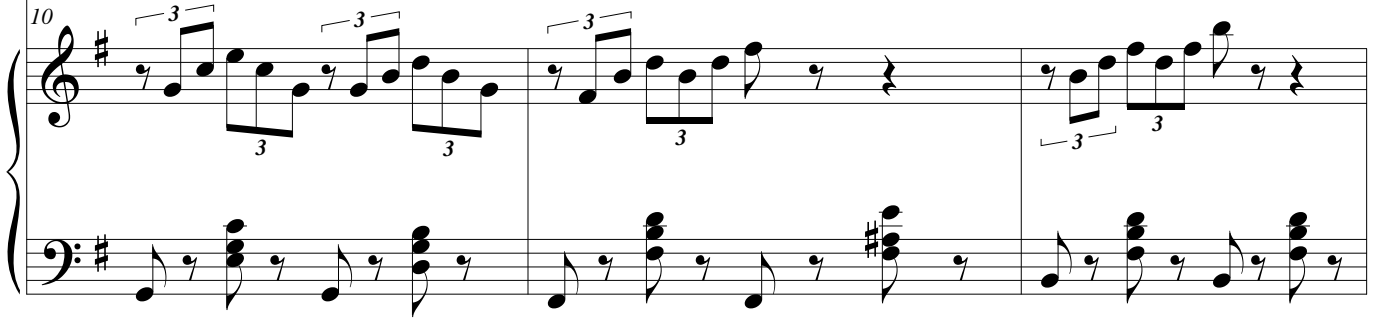
Measures 4-7. The right hand continues the melodic line with a slur and a fermata. The left hand continues with triplets and chords. A  $\mu$  marking is present below the right hand staff.

Measures 7-10. The right hand continues the melodic line with a slur and a fermata. The left hand continues with triplets and chords.  $\mu$  markings are present below the right hand staff.

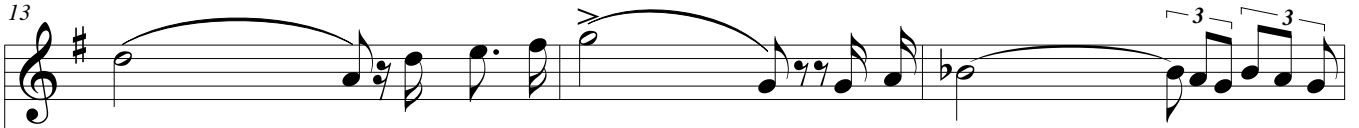
10



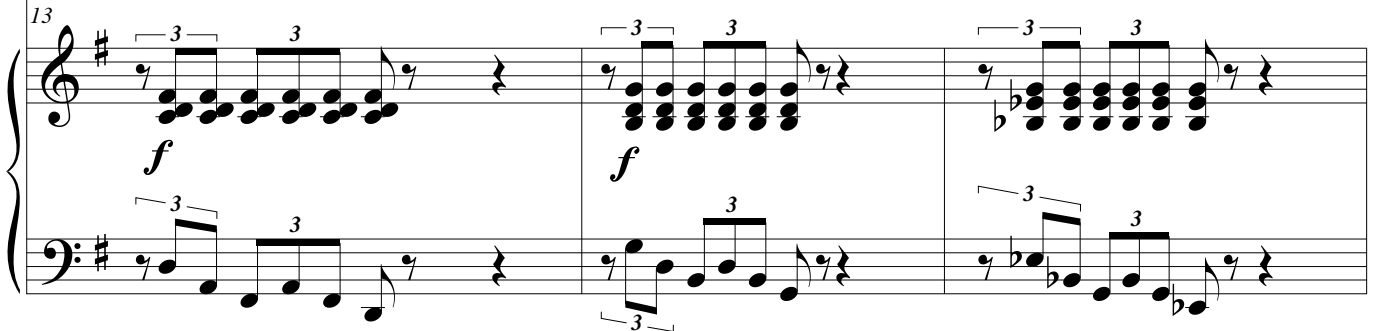
10



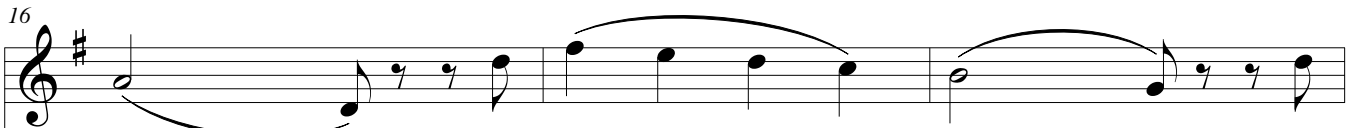
13



13



16



16



19

19

diminuendo

22

22

*p* con la parte

*f*